

***TK GUIDES***

***FAN BLADE  
REPLACEMENT***

**MODELS :**

***TK3000 - TK3000H***

***TK6000 - TK6000H***

***TK9000 - TK9000H***

# EQUIPMENT



*Screw-drivers*



*Key for nut (10)*



*Fan Blade  
(spare part)*

# STEP n. 1

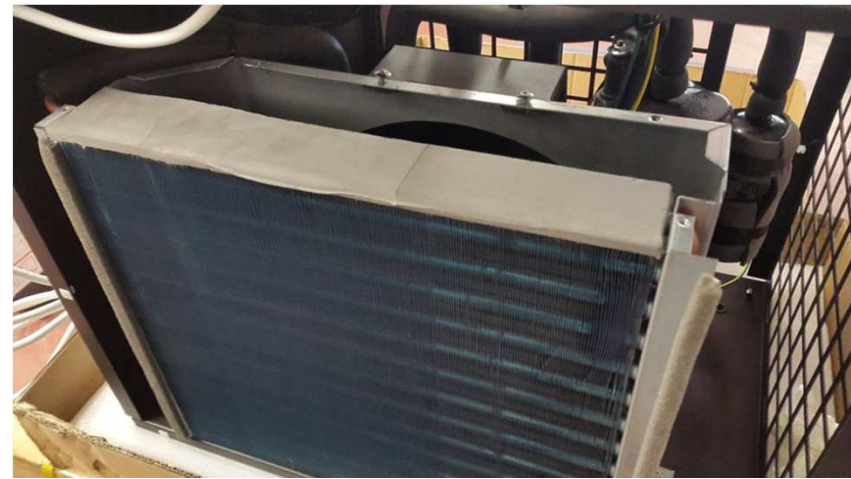
*Disconnect the chiller from power supply. Never touch internal part or dismount chiller when it is connected to power supply to avoid potential electric shock.*

*Remove the metal cover using the screw-driver.*



## **STEP n. 2**

*Remove the conveyor top cover: take out the 6 screws (shown in the picture) using the small screw-driver*





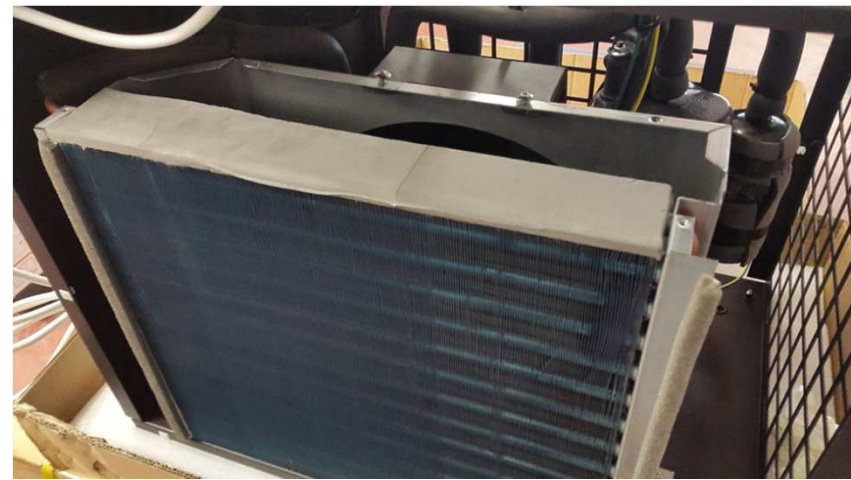
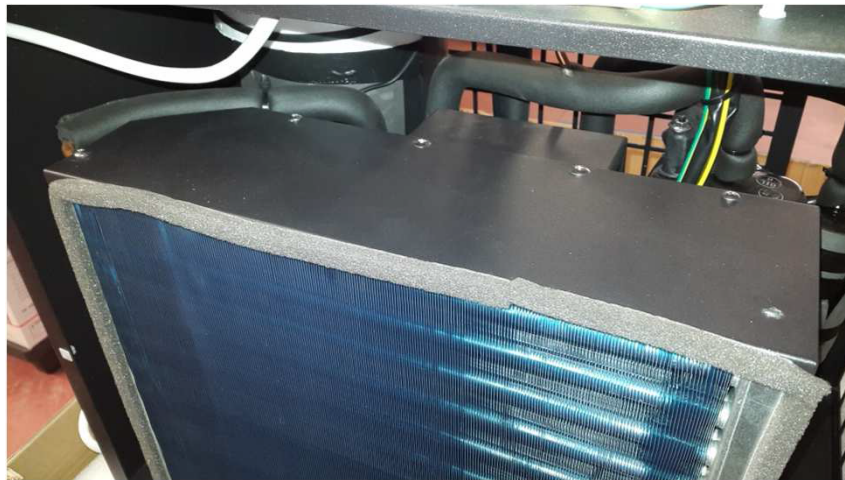
# STEP n. 3



*Remove the 2 screws mounted alongside the condenser, using the screw-driver (as shown in the picture).*

# STEP n. 4

*Remove the conveyor top cover: take out the 6 screws (shown in the picture) using the small screw-driver*



*Please note that the condenser pipe must be moved very carefully because the copper pipe must be returned to the original position without damage it.*

# STEP n. 5

*Replace the broken fan blade with a new one: take out the nut using the key.*

*Please be careful when doing this operation: the fan blade material is not too strong and the new component can break.*

*Please note that the fan blades should spin freely without coming in contact with any structural support. When replacing fan blades, always check to see that the screws between fan motor and metal support are tight and secure so that the fan blades do not touch the conveyor housing.*





## ***STEP n. 6***

*Re-assemble the condenser (2 screws on one side) and the conveyor (6 screws on the top part) as before.*

*Then, put the cover on the chiller and assemble each screw.*